

Tomato variety Arka Rakshak leh Arka Samrat chin leh enkawl dan

Sik leh sa mamawh zawng: Khawlum lam chu 15-27°C ah a tha duh. Tin, ruah tam lutuk hian a par leh rah a ti chhe thin.

Lei mamawh zawng : Lei thur lam ah pH 6-7 a mamawh a, Tui luan ral zung zung theihna hmun ni thei se la.

Inkarhlat zawng:

Thlur leh thlur : 4.5 feet

Thlai leh thlai : 3 feet (Acre khat zelah kung 3292 a leng)

A chi ngai zat: Gram khatah hian tomato chi 285 a awm tlangpui. Acre khat zelah a chi 15g mamawh ani

Nursery: Nursery lei chu metre khat zelah bawng-ek ro tha kg 4 vel in hneh taka a lei nen chawh pawlh tur. A chi kui hmain lei chu **Dithane M-45** in hneh taka leih tur. Line mumal taka siam in a chi chu kui tur. Chu mi hnuah Vermi-compost / bawnggek dip(hrik thlap)/ balu in emaw pan tein khuh leh tur. Nursery bed chu ni 3-5 vel buhpawl emaw saiip in emaw khuh tur. Kui hnuah nitin tui pek tur. Achi arawn tiah vel leh a khuh na hawn tur. Protray hman chuan coco peat emaw vermicompost emaw hman tur. Ni 25-30 hnuah phun sawn tur.

Lei tha pek dan:

- 1) **NPK** @60:45:60 kg/acre (Urea 92.2, DAP 97.8kg & MOP 100). Phunsawnin urea a dose chanve leh DAP leh MOP full dose pek tur. Urea la bang chu hmun hnihah then lehin phunsawn atang a ni 30 ah leh ni 60 ah pek leh tur.
- 2) **FYM** (Bawnggek ro tha hman dawn chuan, phun hma in) ton 9 chu acre 1 hmunah lei nen chawhpawlh tur.
- 3) **Neem cake:** 250kg phun hmain lei nen chawhpawlh tur.

Natna leh Rannung

Late blight: A rah leh a hnah ah alang hmasa a, alo uk deuh a, chu chu lian zelin, a hnah hnung lamah hmuar alo awm bawk thin. A kung ah uk val a lo awm. A hnah ati tla bawk. Boruak hnawmah a darh chak bik

Control: Lei chu Bordeaux mixture in phun atanga ni 15 ah leiah hneh takah kah tur, a nasat phei chuan Ridomil 2g/litre a kah bawk tur.



Bacterial Wilt : Hei hi tomato natna ah a buai thlak ber leh buaipuiawm ber a ni. Boruak lum leh hnawngah a pung chak bik a, a hnah hnuai lam atla hmasa thin. A zar kung hi tan a thingpui no fima tui dahah chuan chiah ila zam paw chiai chiai a lo awm thin. A kung chu zai phelin rawng uk alo awm thin.

Control:

- 1) Bleaching powder 10kg/ha(Tin hnih leh a chanve) lei siam laiin theh tur.
- 2) A na a hriat apiang chu lei tlem telin phawia satha ipah dah zel tur, pawhphawina hmun leiah khan Copper Oxichloride emaw Ridomil Gold in emaw hneh taka leih zel tur.
- 3) Thlai dang nen chin chhawk tur.



Fruit borer : Pangang hring a ni a, ahnah a ei chhe thin a, a rahah te bu khuarin a ei chhe thin.

Control : Arah e ei kuak hmuh chuan paih zel tur, a pangang hmuh pawn that zel tur. Derhken ni 40 a upa chu tomato kung sawm paruk (16) zelah phun. Pheromone trap, Helilure nen, hectare khat zelah 12 tal awm thei se. *Bacillus thuringiensis* 2g/lit a kah pawh atha



Tomato Leaf curl virus: A hnah chu alo te a, a inkhawr zum a, a par a tla bawk a, a hnah tlang rawng a lo eng bawk thin, Hetianga thlai alo awm tawh chuan a than a thuin rah a chhuah thei tawhlo.

Control: Imidachlopid/ Dimethoate @2ml/litre tui : Ni 15, 25, 45 phun sawn atangin kah tur .



Fusarium wilt A kung naupangah ahnah tha zam alo ral thin, ahnah alo eng . A hnah hnuai lampang a ro hmasa a, a tla thin . A lo rei deuh a a kung chhungah uk a lo awm thin, than a ti thu a, a thih phah thin.

Control : Paih daihtur a na hmuh in .Carbendazim in kah tur, thlai ngai chin loh tur.



White fly A eng val a lo awm thin. Akung lo eng thin. Ahnah a lo vuai a, alo ro bawk thin. Tomato lef curl an tih thlen tu ani

Control: Dimethoate @ 1ml/lit, malathion 1.5 ml/lit leh carbofuran @ 40kg /ha



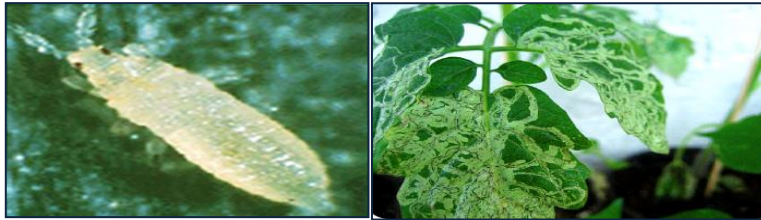
Mealy bug : A par atla thin Spotted wilt virus a thlen thin .

Control : Dimethoate 2ml/litre tui



Leaf miner : Tomato hnahah maimawm ril ang tak in avar in a awm thin Hnah ati ro thin

Control : NSKE 5% in kah tur



Root Knot Nematode: A thang thei lo thin. Thlai zung ah bawk te reuh te te a awm thin

Control: Phunsawn dawn in azung chu Dimethoate in darkar 6 chiah tur. Neem cake/thingzai nawi 25q /ha lei nena chawhpawlh a tha.



Physiological disorder

Blossom end rot: Calcium tlak chham vang in a awm thei. Nitrogen tam vang pawn a awm thei . lei hi ph 6.5 tal ni thei se. Lei atawk chauh in ahnawng tur ani. Lei khuh a tha -mulching. Tui pek that leh fertilizer dose dik a pawl mawh



Cracking(a rah keh) : A rah athan chak lutuk in a lo awm thin. Ruah nasa tak a asur a, ni a sat leh vak in a rah a keh thin. Rei tak chung tui pe lo vin, pek thuta nih in. Lei a tawk chauh in ahnawng tur a ni



KRISHI VIGYAN KENDRA

KHAWZAWL: CHAMPHAI DISTRICT, MIZORAM

kvkhawzawl@gmail.com



Tomato variety Arka Rakshak leh Arka Samrat chin leh enkawl dan



Prepared by
Dr. Malsawmkimi, Scientist (horticulture) &
Samson Sailo, Programme Asst.
KVK, Champhai District, Mizoram.